

FOR SALE

21.73 Acres ~ Stamer Road



- ◆ MOSTLY OPEN ACREAGE
- ◆ IDEAL FOR BUILDING/FARMING
- ◆ COUNTY ROAD FRONTAGE
- ◆ WOODED TREE LINE
- ◆ GREAT LOCATION
- ◆ SOME RESTRICTIONS WILL APPLY
- ◆ WRIGHT CITY R-II SCHOOL DISTRICT
- ◆ NO COMMERCIAL DOG KENNELS, DEED RESTRICTIONS APPLY *Agent part owner.
- TAXES \$1,976 FOR 2017 FOR FULL 74.04 ACRES

STAMER ROAD, WRIGHT CITY

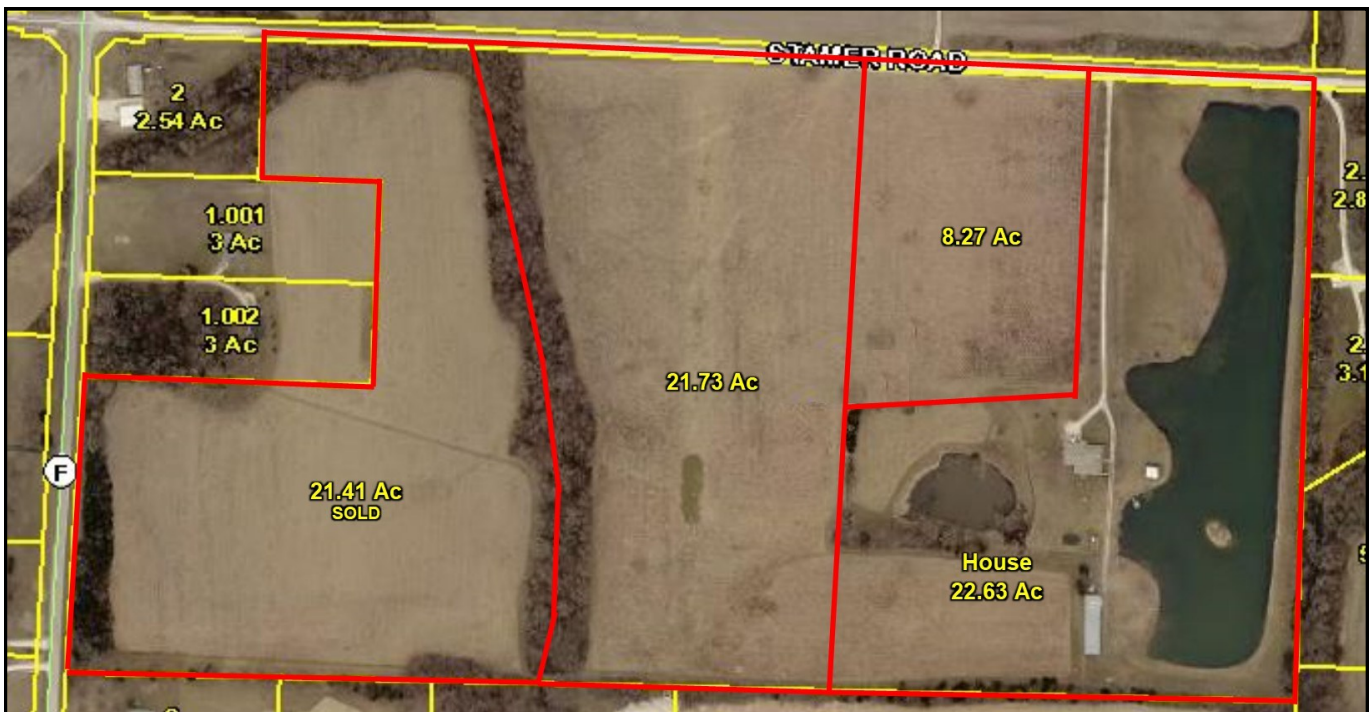
PRICE: \$12,000 PER ACRE

***21.73 ACRES**

(HOUSE ON 22.63 ACRES FOR \$434,900)

(HOUSE ON 30.90 ACRES FOR \$514,900)

Directions: I-70 to the first Wright City exit # 200. Turn left on Elm Street for 2/10 mile to right onto Hwy F. Continue on Hwy F for approximately 2.3 miles. Turn left onto Stamer Road and continue to the property on the right. **Watch for the West-bound Real Estate sign.**



WESTBOUND REAL ESTATE ~ 800-656-7595 ~ WWW.LANDTODAY.COM

For more information please contact: **Philip Reid at 314-486-8642**