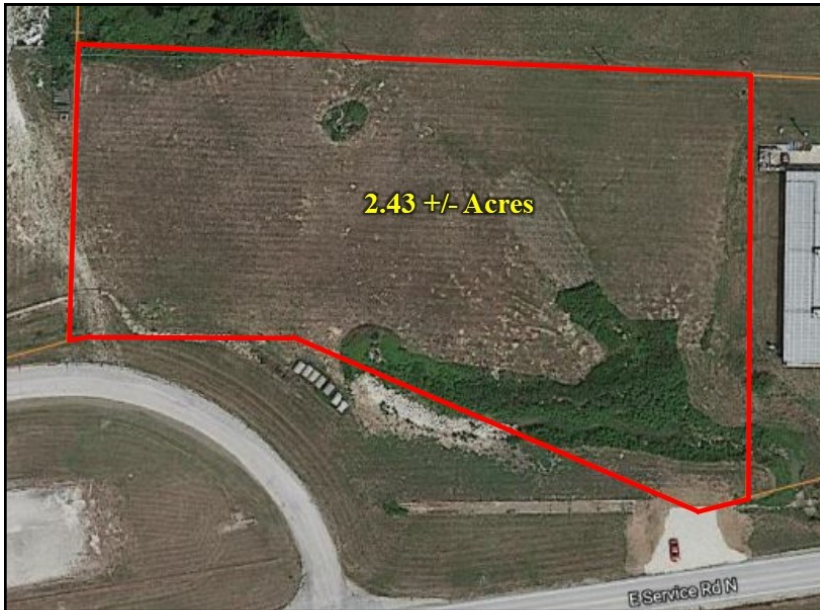


# FOR SALE

## 4.23 Acres ~ N. Service Road



### COMMERCIAL GROUND!

- Mostly Open Acreage
- Great Building Site
- Ideal Commercial Location
- High Traffic Area
- N. Service Road Frontage
- Easy Access
- Interstate 70 Visibility

\* Taxes \$360 for 2017



**NORTH SERVICE ROAD W  
WRIGHT CITY, MO 63390**

**LOT SIZE: 4.23 +/- ACRES  
PRICE: \$325,000**



This commercial property offers an ideal building site for your new business. There are established businesses on both sides and frontage off the North Service Road with Interstate 70 visibility. Great location in a high traffic area with easy access to I-70.

**Directions:** 70 to the second Wright City exit #199. Turn right and make an immediate right onto the Northeast Service Road. Continue approximately 1/2 mile to the property on the left. **Watch for the Westbound Real Estate sign.**

For more information please contact:  
**Philip Reid 314-486-8642**