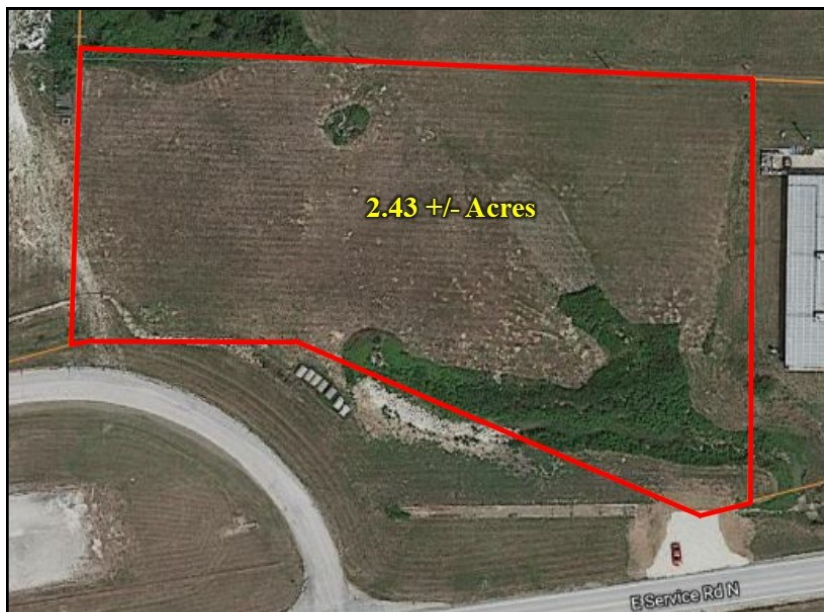


FOR SALE

2.43 Acres ~ N. Service Road



- Mostly Open Acreage
- Great Building Site
- Public water & sewer available
- Ideal Commercial Location
- High Traffic Area
- N. Service Road Frontage
- Easy Access
- Interstate 70 Visibility

* Taxes \$360 for 2017

**NORTH SERVICE ROAD W
WRIGHT CITY, MO 63390**

LOT SIZE: 2.43 +/- ACRES

PRICE: \$325,000



This commercial property offers an ideal building site for your new business. There are established businesses on both sides and frontage off the North Service Road with Interstate 70 visibility. Public water and sewer are available. Great location in a high traffic area with easy access to I-70.

Directions: 70 to the second Wright City exit #199. Turn right and make an immediate right onto the Northeast Service Road. Continue approximately 1/2 mile to the property on the left. **Watch for the Westbound Real Estate sign.**

For more information please contact:
Philip Reid 314-486-8642