

FOR SALE

66.49 Acres ~ Schuetzenground Rd.



- ◆ OPEN & WOODED ACREAGE
- ◆ BLACKTOP FRONTAGE
- ◆ IDEAL FOR FARMING OR DEVELOPING!
- ◆ GOOD INVESTMENT
- ◆ GREAT LOCATION
- ◆ WARRENTON R-III SCHOOL DISTRICT

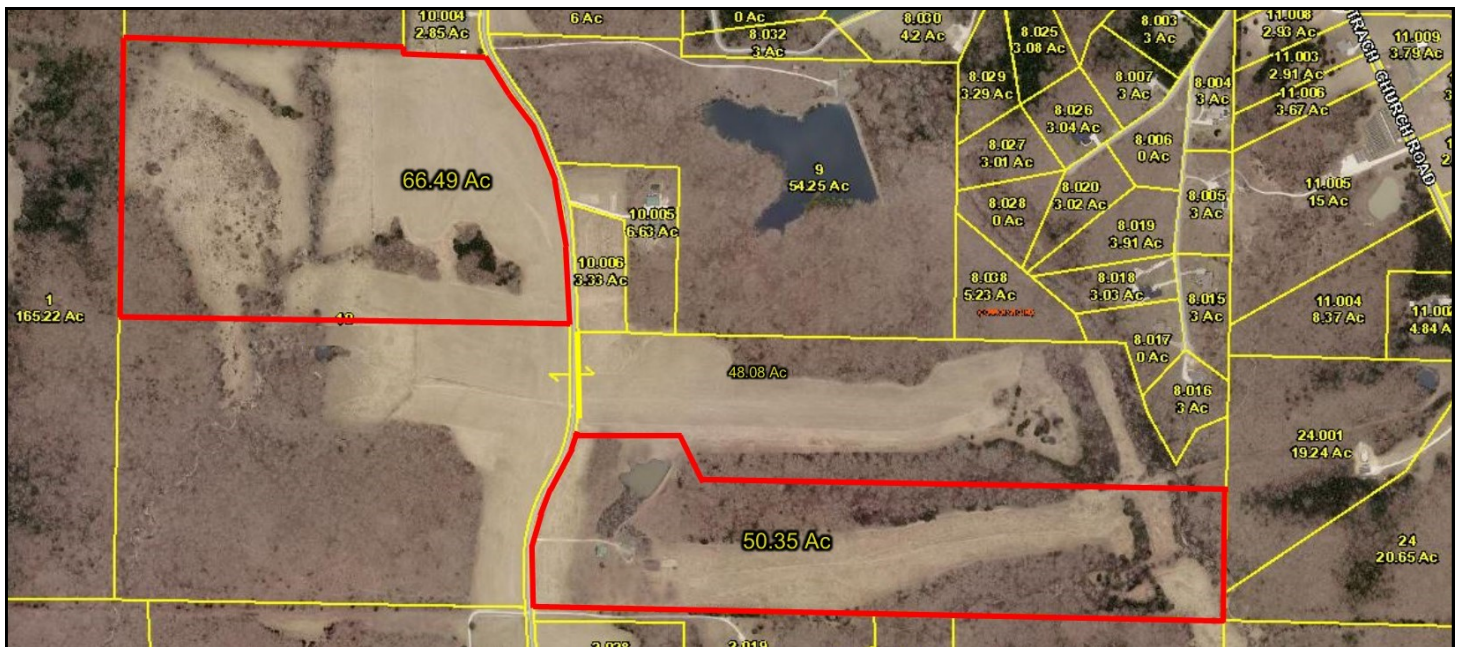
* TAXES \$1,037 FOR 2017

26052 SCHUETZENGROUND ROAD

PRICE: \$8,500 PER ACRE

***SELLER MAY DIVIDE**

Directions: I-70 west to the Warrenton exit, #193. Turn left on Hwy 47 for 3/4 mile to the Kroger intersection. Turn left on State Hwy M and proceed approx. 2.7 miles to Schuetzenground Road. Turn right on Schuetzenground Road and continue 1.5 miles to the property on both sides of the road. **Watch for the Westbound Real Estate sign.**



WESTBOUND REAL ESTATE ~ 800-656-7595 ~ WWW.LANDTODAY.COM

For more information please contact: **Philip Reid at 314-486-8642**