

FOR SALE

33 +/- Acres ~ Schuetzenground Rd.



- ◆ MOSTLY OPEN ACREAGE
- ◆ BLACKTOP FRONTAGE
- ◆ WOODED BACK DROP
- ◆ IDEAL FOR FARMING OR BUILDING!
- ◆ GREAT LOCATION!
- ◆ WARRENTON R-III SCHOOL DISTRICT
- ◆ SOME RESTRICTIONS MAY APPLY

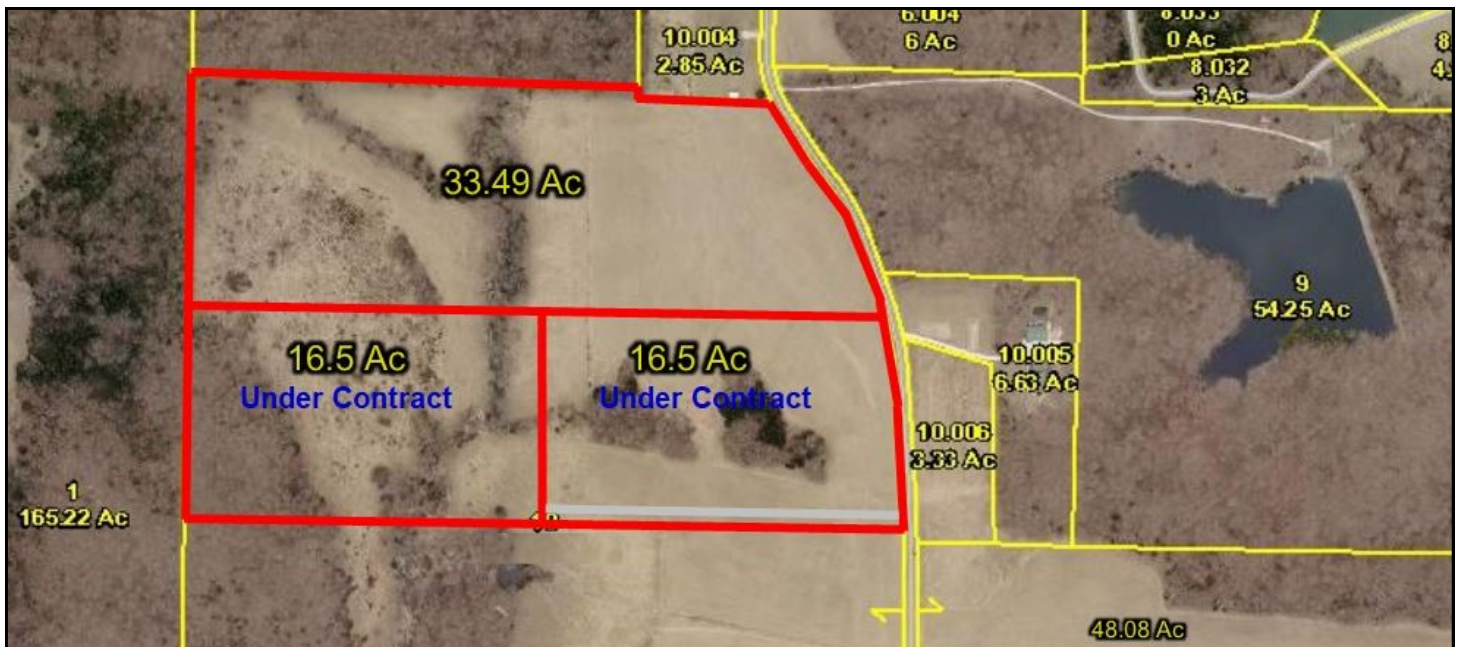
* TAXES \$ TBD FOR 2018 (PART OF LARGER TRACT)

SCHUETZENGROUND ROAD

PRICE: **\$8,500** PER ACRE

33.49 +/- ACRES

Directions: I-70 west to the Warrenton exit, #193. Turn left on Hwy 47 for 3/4 mile to the Kroger intersection. Turn left on State Hwy M and proceed approx. 2.7 miles to Schuetzenground Road. Turn right on Schuetzenground Road and continue 1.7 miles to the property on the left. Watch for the Westbound Real Estate sign.



WESTBOUND REAL ESTATE ~ 800-656-7595 ~ WWW.LANDTODAY.COM

For more information please contact: **Philip Reid at 314-486-8642**