

# FOR SALE

## 33.64 Acres Charrette Creek Road



### IDEAL HUNTING GROUND!

- Nice secluded property
- Ideal for hunting
- Adjoining Innsbrook Est.
- Room for recreation!
- Warrenton School District

\* Taxes \$220 for 2017

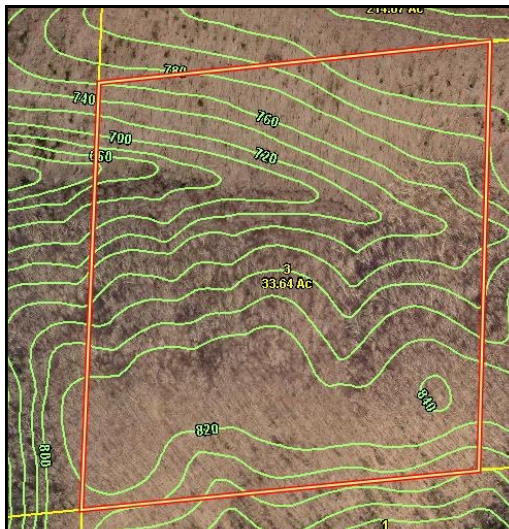
**CHARRETTE CREEK ROAD  
WARRENTON, MO 63383**

**LOT SIZE: 33.64 +/- ACRES  
PRICE: \$3,500 PER ACRE**



Fully wooded acreage ideal for a secluded hunting site with plenty of room for recreation. Good location adjoining Innsbrook Estates. Property is landlocked and will need an easement through the neighbors. Call agent for full details. Warrenton School District.

**Directions:** Take 70 west to Warrenton exit #193. Turn left onto South Hwy 47 and proceed 7.4 miles to Hwy CC. Turn left on CC and go approximately 3.6 miles to Charrette Creek Road on your left. Continue approximately 2.5 miles the property is landlocked. **Must call for full details.**



For more information please contact:  
**Philip Reid 314-486-8642**