

# FOR SALE

## .77 Acre Highway H



### FRONTAGE ON HWY H!

- Commercial property  
Zoned C-4
- Open ground
- Great laying parcel of land
- Many possibilities
- Close to I-70
- Taxes \$28 for 2017
- Wright City School District

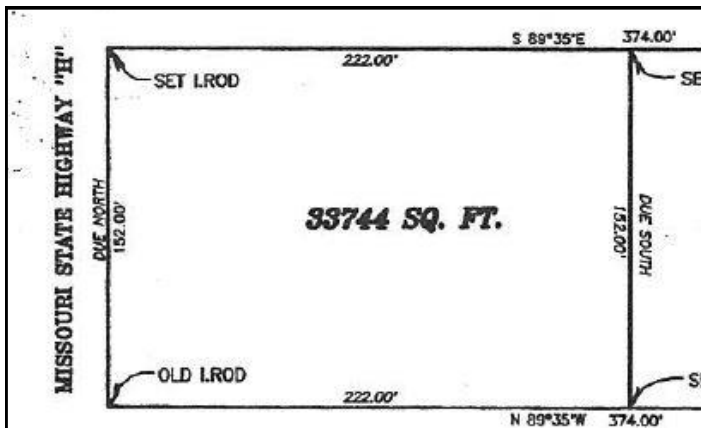


**HIGHWAY H  
WRIGHT CITY, MO 63390**

**LOT SIZE: .77 ACRES  
PRICE: \$34,900**

Great laying parcel of land,  
close to I-70 just Southwest of  
exit #199 in Wright City on  
Hwy H. Many possibilities!

Directions: From exit 199 in Wright City take the South Service Road West a short distance to Hwy H. Turn left on Hwy H and proceed to the property on the left. **Watch for the Westbound Real Estate sign.**



For more information please contact:  
**Philip Reid 314-486-8642**