

FOR SALE

3.55 Acres ~ Owl Creek Estates



BEAUTIFUL HOME SITE - LAKE FRONTAGE!

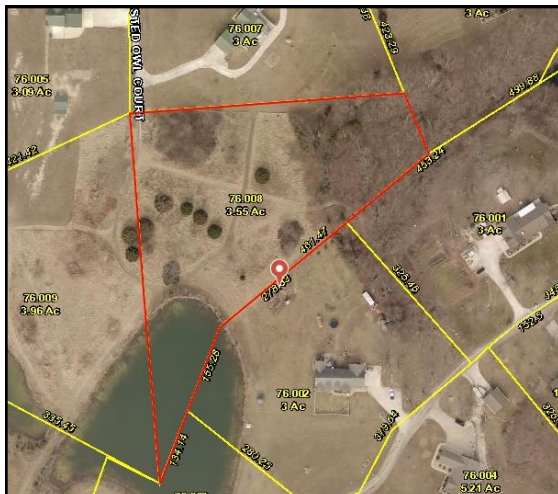
- Beautiful setting overlooking shared lake!
- Variety of scattered trees!
- Great for custom building!
- Public water available
- 1,200 sq. ft. minimum, no mobiles, other restrictions apply.
- Warrenton School District
 - *Taxes \$392 for 2017
 - *Assessment \$200 yearly

LOT 73 : 3.55 ACRES
PRICE: \$34,900

CRESTED OWL COURT
WARRENTON, MO 63383



This beautiful laying acreage offers a variety of scattered trees, lake frontage and public water available. Perfect place for building your new custom home overlooking the lake! Located in a very nice subdivision with blacktop roads. Close to Warrenton, just off South Hwy 47 and minutes from I-70! * Agent Owned



Directions: 70 west to Warrenton exit #193. Turn left on South Hwy 47 and go approximately 4.2 miles to Owl Creek Drive. Turn left on Owl Creek Drive and proceed 0.3 mile to Crested Owl Court. Turn right onto Crested Owl Court and continue 0.2 mile to the property on the left. **Watch for the Westbound Real Estate sign.**

For more information please contact:
Philip Reid 314-486-8642