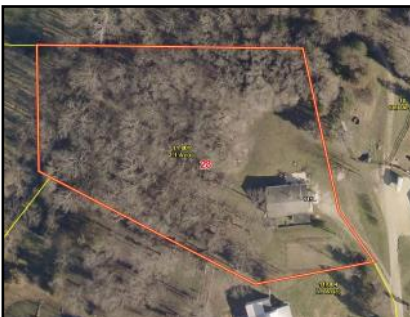


FOR SALE

115 Neill Court, Wright City, MO 63390



3 BEDROOM, 2 BATH RANCH HOME ON 2 PLUS ACRES

PRICE: \$129,900

- ◆ OPEN FLOOR PLAN
- ◆ EAT-IN KITCHEN
- ◆ WOOD STOVE
- ◆ MAIN FLOOR LANDRY
- ◆ SLIDING GLASS DOOR
- ◆ CONCRETE PATIO
- ◆ SHARED WELL
- ◆ 1 SPACE CARPORT
- ◆ GREAT LOCATION
- ◆ WRIGHT CITY R-II SCHOOL DISTRICT

* TAXES \$1,027 FOR 2017

This 3-bedroom 2-bath Ranch home has a great open floor plan with quiet surroundings and convenient access to both Interstate 70 and Hwy 61. The property sits on just over 2 acres but it feels like you are on so much more due to the adjacent properties. This home offers a great combination of open and wooded ground with a nice one car space carport, concrete patio and plenty of room to roam.

Directions: Take I-70 to exit #200 to NE Service Rd then turn left (north) onto State Hwy J. Continue 4.3 miles to left onto Neill Drive and go 0.3 mile to turn right onto Neill Court. Proceed on Neill Court to end of road 115 Neill Ct. is on the left. **Watch for the Westbound Real Estate sign.**

For more information please contact:
Dennis Mehegan 312-498-1425

WESTBOUND REAL ESTATE 800-656-7595
WWW.LANDTODAY.COM