



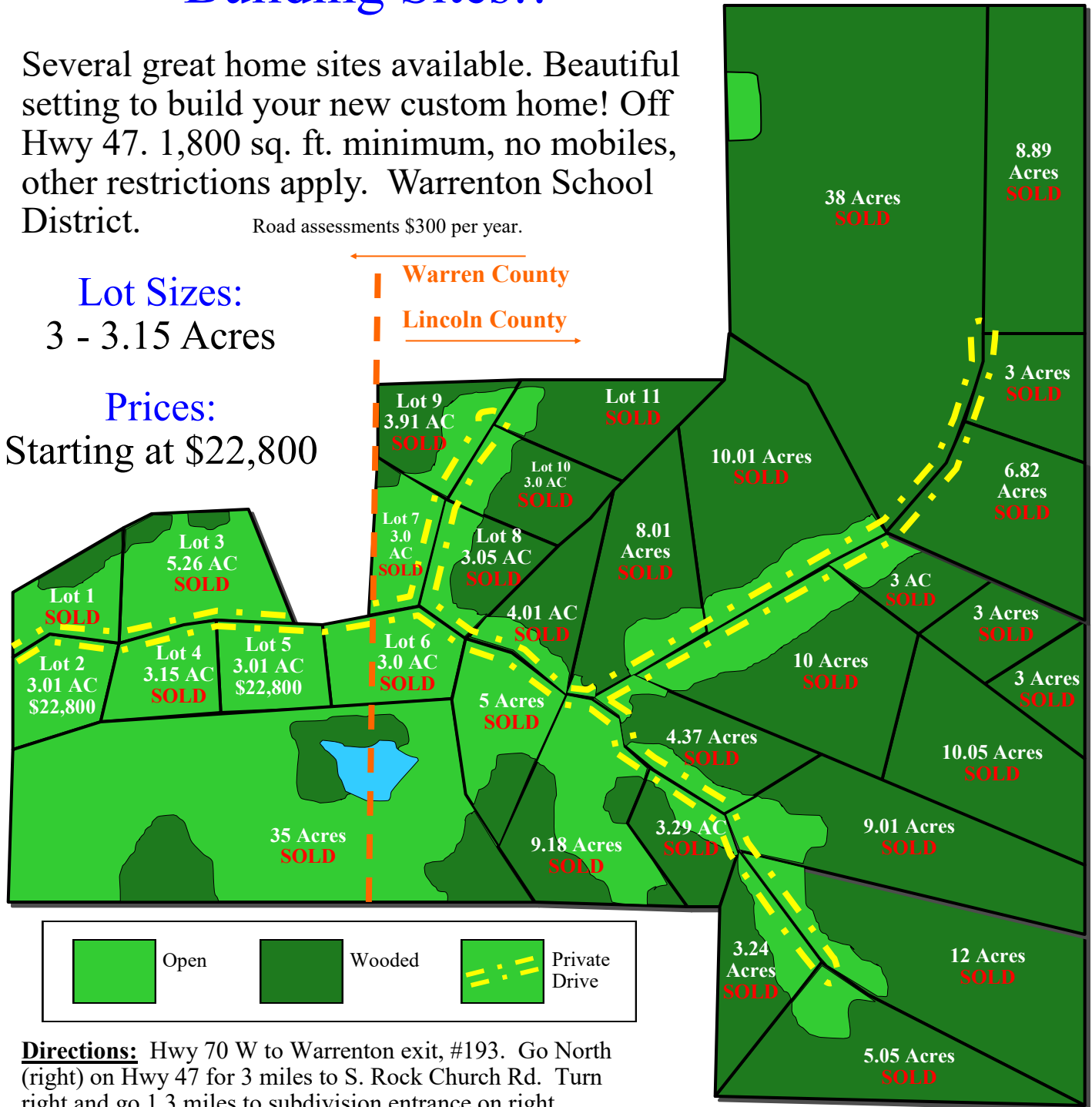
# Canterbury Park

## Gorgeous Building Sites!!

Several great home sites available. Beautiful setting to build your new custom home! Off Hwy 47. 1,800 sq. ft. minimum, no mobiles, other restrictions apply. Warrenton School District.  
Road assessments \$300 per year.

**Lot Sizes:**  
3 - 3.15 Acres

**Prices:**  
Starting at \$22,800



**Directions:** Hwy 70 W to Warrenton exit, #193. Go North (right) on Hwy 47 for 3 miles to S. Rock Church Rd. Turn right and go 1.3 miles to subdivision entrance on right.

\* Please call office for full details, some lots are agent owned.