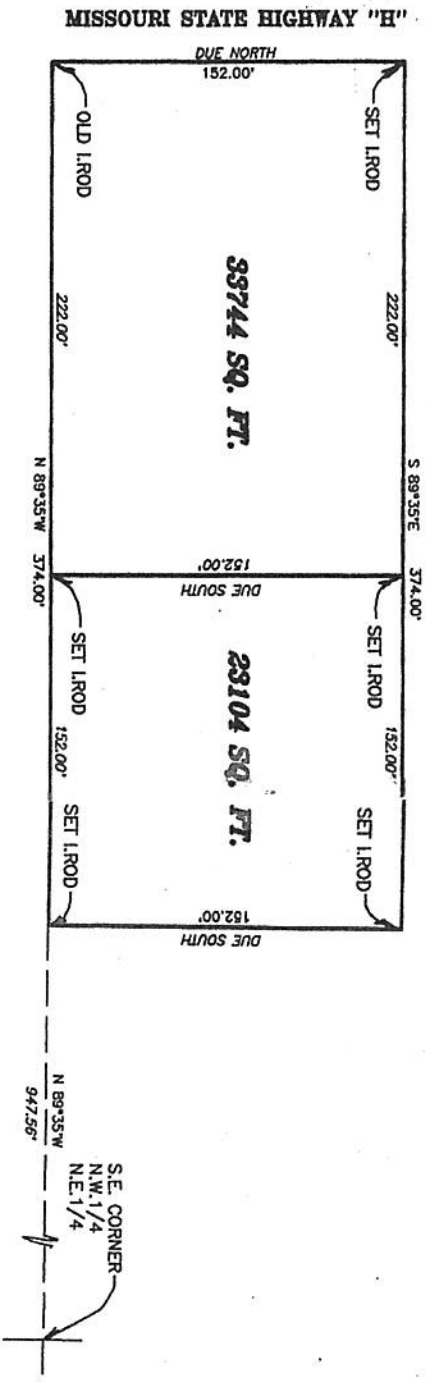
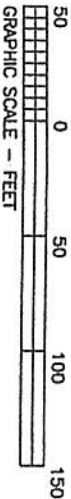


SECTION 20, TOWNSHIP 47 NORTH, RANGE 1 WEST  
CITY OF WRIGHT CITY, WARREN COUNTY, MO

N.W.1/4, N.E.1/4



THIS IS TO CERTIFY THAT AT THE REQUEST OF  
DALE SHERMAN, WE HAVE MADE A  
SURVEY AS SHOWN ABOVE AND THAT IT REPRESENTS A  
TRUE AND ACCURATE RECORD OF SAID SURVEY AND  
WAS EXECUTED IN ACCORDANCE WITH THE CURRENT  
MINIMUM STANDARDS FOR PROPERTY BOUNDARY SURVEYS  
OF THE MISSOURI STATE LAND SURVEYORS  
ROBERT L. LEWIS  
PROFESSIONAL LAND SURVEYOR NO. 1004  
WARREN COUNTY, SURVEYOR



1.31 AC. TOTAL

<p><b>Lewis-Bade Inc.</b> Professional Land Surveyors and Professional Land Engineers</p>			
<p>PHONE (636) 456-2615 101 EAST WALTON WARRENTON, MO. 63383</p>			
<p>SURVEYED BY: STU, JOSH</p>		<p>DATE: 9 - 2003</p>	
<p>REVISIONS: FEB. 2004</p>		<p>CHECKED BY: LARRY</p>	
<p>SCALE: 1" = 50'</p>		<p>03226</p>	